

 The Scottish Government

Scottish Air Quality Website & Database Project – Annual Seminar

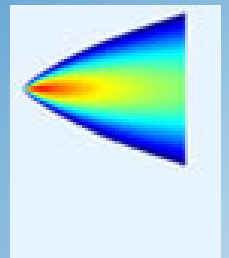
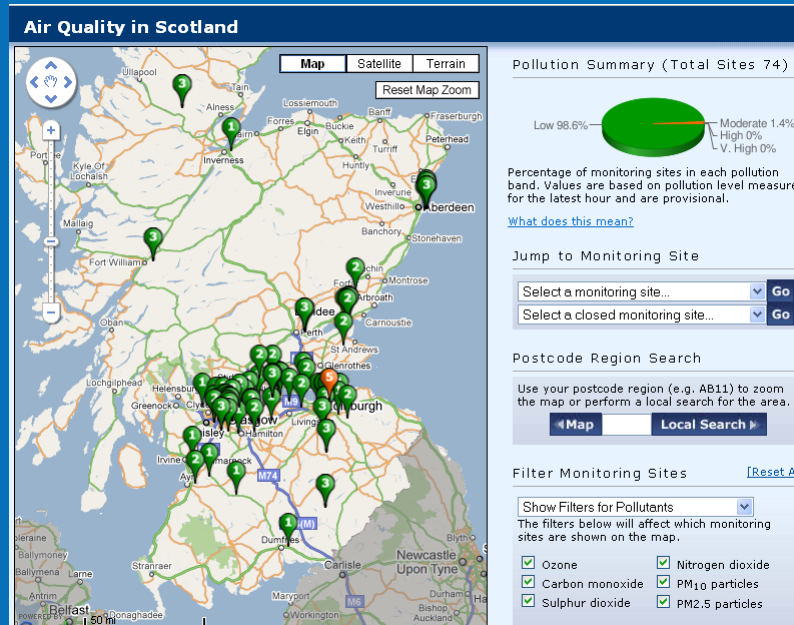
18 March 2013 – Edinburgh

Andrew G Taylor – Air Quality Policy Manager

The Scottish Government

- Pilot study – 2006
- Project officially launched April 2007 – c.50 monitoring sites in the database
- March 2013 – c.90 sites

The Scottish Government





The Scottish Government

news.scotsman.com

Most polluted streets in Scotland revealed



By TRISTIAN STEWART-ROBERTSON

Published on **Sunday 3 February 2013 13:51**

SCOTLAND'S busiest streets are failing to meet air pollution targets, according to new figures from environmental campaigners.

Friends of the Earth Scotland criticised all levels of government for failing to reduce toxins in the air that were meant to be curbed by 2005.

The Scottish Government



Scottish Transport Emissions Partnership
Cleaner air Healthier places





The Scottish Government



**World Health
Organization**
REGIONAL OFFICE FOR **Europe**

"Review of evidence on health aspects of air pollution – REVIHAAP Project"

First results



This publication arises from the project REVIHAAP and has received funding from the European Union.

The Scottish Government

Some key conclusions

- A large body of new studies shows a wide range of adverse health effects associated with PM exposure
- Further confirmation that PM10 and PM2.5 are non threshold pollutants – significant health effects likely down to near-background levels for PM2.5
- Need to revise WHO guidelines for both PM10 and PM2.5
- Strong need to re-evaluate and lower, as a minimum, the Air Quality Directive PM2.5 annual average of $20\mu\text{g m}^3$
- Scientific support for the exposure reduction approach has strengthened



The Scottish Government

WHO guidelines

PM10 – $20\mu\text{g m}^3$ annual average

PM2.5 - $10\mu\text{g m}^3$ annual average

US EPA standards

PM2.5 – $12\mu\text{g m}^3$ annual mean

Scottish Government objectives

PM10 - $18\mu\text{g m}^3$ annual mean

PM2.5 - $12\mu\text{g m}^3$ annual mean